



# CLASSIC COAT™

*Changes or Renews Vinyl and Leather*

## FORD MOTOR COMPANY



ZUEA Midnight Black  
SEM No. 17013



ZUBA Lt. Graphite  
SEM No. 17023



BJAA Lt. Parchment  
SEM No. 17033



ZUCA Med. Graphite  
SEM No. 17043



BJCA Med. Parchment  
SEM No. 17053



AYCA Med. Prairie Tan  
SEM No. 17063



ZU4A Med. Dk. Graphite  
SEM No. 17073



ZU5A Dk. Graphite  
SEM No. 17083

## GENERAL MOTORS CORPORATION



848 Black  
SEM No. 17093



9780 Dk. Gray  
SEM No. 17103



7701 Graphite  
SEM No. 17113



9781 Lt. Gray  
SEM No. 17123



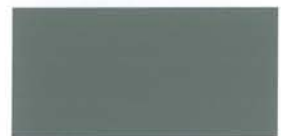
9772 Lt. Neutral  
SEM No. 17133



101E Lt. Oak  
SEM No. 17143



9777 Med. Beige  
SEM No. 17153



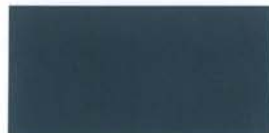
110D Med. Dk. Pewter  
SEM No. 17163



9779 Med. Gray  
SEM No. 17173



195A Med. Neutral  
SEM No. 17183



173B Navy  
SEM No. 17193



149B Shale  
SEM No. 17203



9902 Very Dk. Gray  
SEM No. 17213



642H Very Dk. Pewter  
SEM No. 17223

# DAIMLER CHRYSLER MOTORS



AZ Agate  
SEM No. 17233



L5 Taupe  
SEM No. 17243



L2 Lt. Taupe  
SEM No. 17253

# HONDA



Classy Gray  
SEM No. 17263



Mild Beige  
SEM No. 17273

# TOYOTA



Oak  
SEM No. 17283



Ivory  
SEM No. 17293



Blue Gray  
SEM No. 17303

# ACURA



Tan  
SEM No. 17313

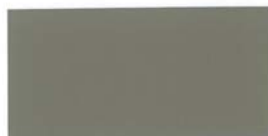


Creamy Ivory  
SEM No. 17323



Charcoal  
SEM No. 17333

# BMW



Neutral  
SEM No. 17343



Silver Gray  
SEM No. 17353



*The Right Choice*

SEM PRODUCTS, INC., 651 Michael Wylie Dr., Charlotte, NC 28217-1546

704-522-1006 · 800-831-1122

[www.sem.ws](http://www.sem.ws)